

HELENOR MINI



FC CE RoHS

POWERED BY



OSRAM



LITE SCIENCE®

Shenzhen Lite Science Electronics Co., Ltd.

Email: sales@litescience.com

Web.: www.litescience.com



HELENOR MINI

Designed for growing medical plants
in tent with size:
4'X 4' (1.2m * 1.2m)
5'X 5' (1.5m * 1.5m)

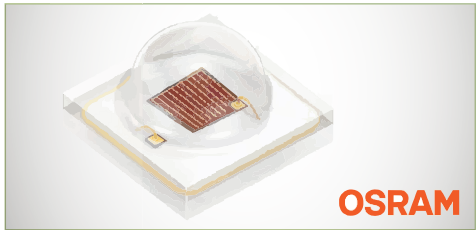
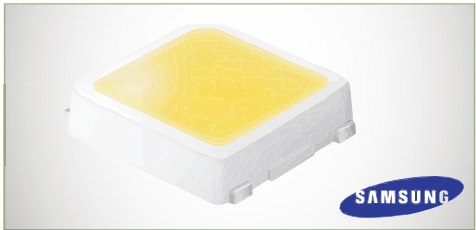
HELENOR MINI 480W

- Efficacy up to 2.7 $\mu\text{mol}/\text{J}$ (Optional)
- SAMSUNG LM301B LM301H , OSRAM 660nm
- MEAN WELL LED driver
- Knob dimming+RJ port dimming 0%-100%
- High Yield: more than 2 grams per watt
- Fast installation
- 5~7 years warranty

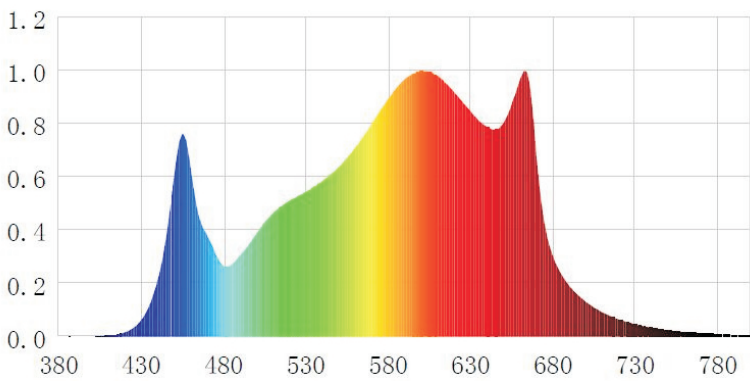
Technical Specifications

LED Fixture	HELENOR MINI 480W		
Input Voltage +/- 10%	120 Vac	240 Vac	277 Vac
Max. Input Current	4.1 Amps	2.15 Amps	1.9 Amps
Power Factor	0.99	0.95	0.95
Max. Wattage +/- 5%	480 Watts	480 Watts	480 Watts
Qty. of Light Bars	6 Bars	6 Bars	6 Bars
Light Output PPF	1,300 $\mu\text{mol}/\text{s}$	1,300 $\mu\text{mol}/\text{s}$	1,300 $\mu\text{mol}/\text{s}$
LED Driver	MEAN WELL	Surge Protection	6KV
LED Brand	SAMSUNG & OSRAM	LED Configuration	3000K+4000K & 660nm
Dimming	Knob + RJ port	Efficacy	2.7 $\mu\text{mol}/\text{J}$
Dimming	0%-100%	Power Cord Length	6' (1.8 M)
IP Rate	IP 66	Max. Ambient Temp.	95°F (35°C)
Warranty	5~7 Years	Mounting Height	>6" (Above Canopy)

LITE SCIENCE®



Full Spectrum



Wavelength Range	PPF Proportion
< 400nm	0 %
400-500nm	13.62 %
500-600nm	39.33 %
600-700nm	44.34 %
700-800nm	2.71 %

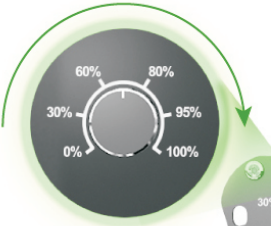
Coverage Footprint

HELENOR MINI 480W

Vegetative stage: 3' X 3' (0.9m*0.9m) to 6' X 6' (1.8m * 1.8m)

Flowering stage: 3' X 3' (0.9m*0.9m) to 5' X 5' (1.5m * 1.5m)

Knob+RJ14 Port Dimming



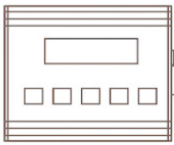
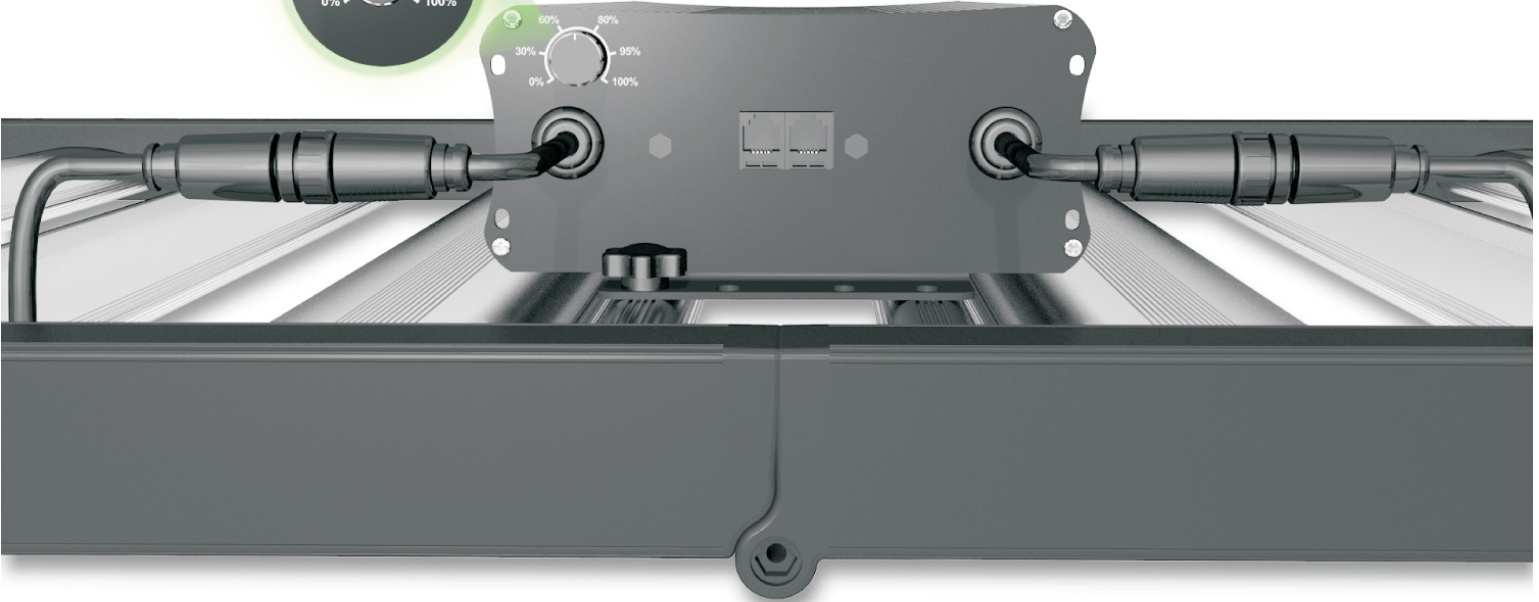
480W
Actual Power



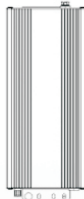
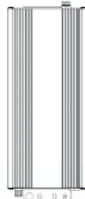
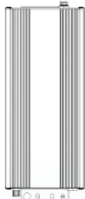
100-277V AC
Input Voltage



>150,000 Hrs
Lifespan



0~10V Controller
Sold Separately



Using a Daisy Chain setup, a Max. of 80 lights.
Can be Connected one 0~10V Controller.
(Sold Separately)
Compatible with 0~10V Controller such as
Gavita master EL2 and Trolmaster
HCS-1 & LMA-14.

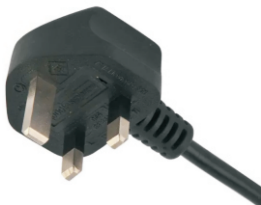
Options of Plug



USA & Canada & Japan



Europe

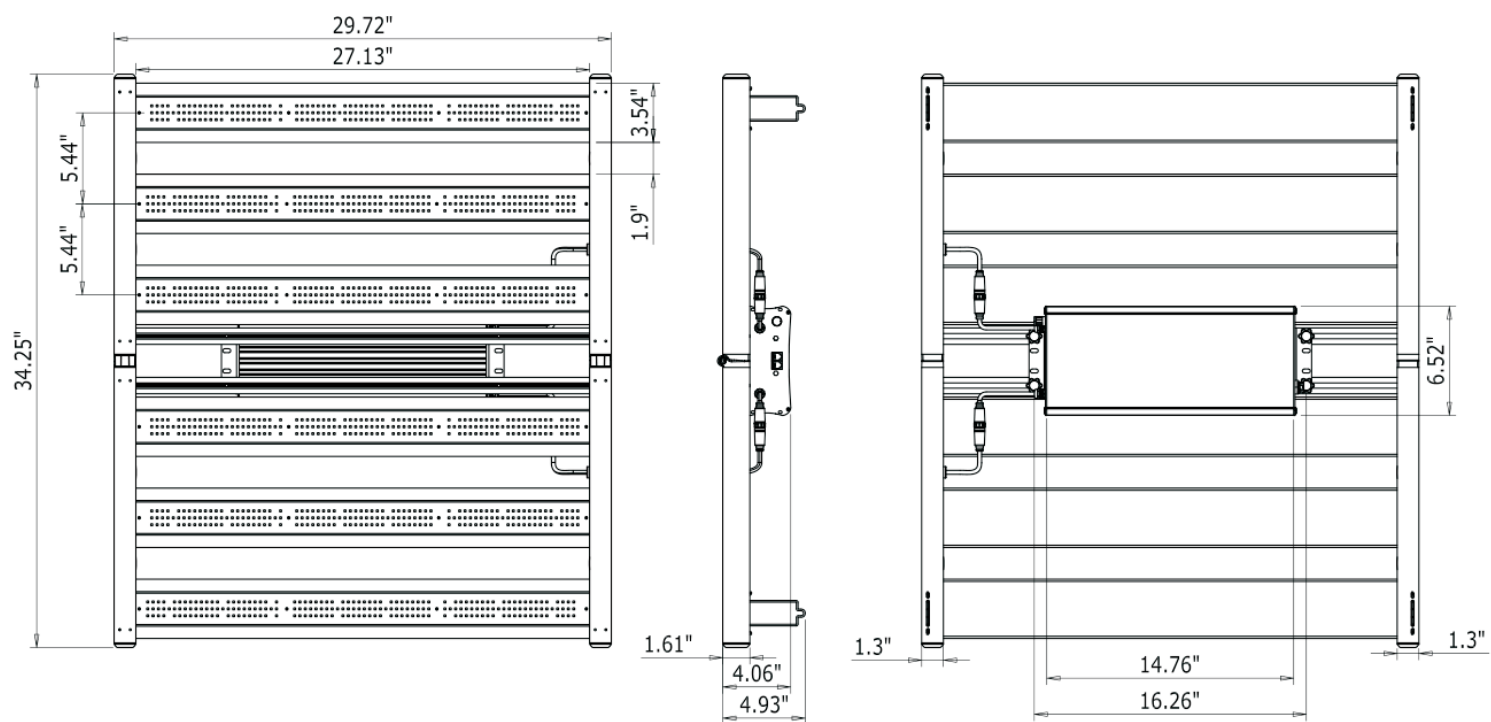


UK



Australia

Dimension & Weight



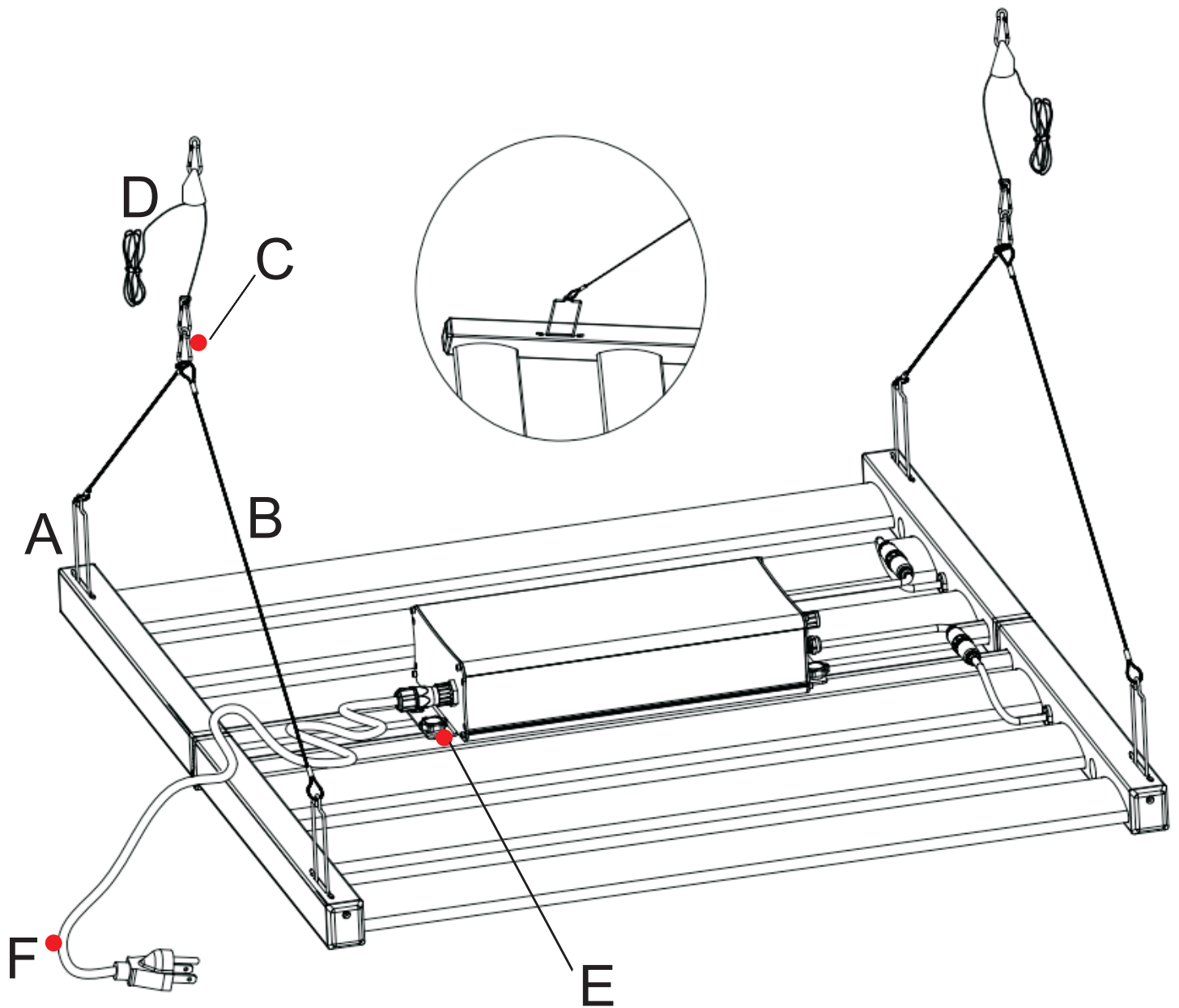
Fixture Dimension:
870mm X 755mm X 103mm
34.25" X 29.72" X 4.06"

Package

HELENOR MINI 480W Luminaire + Driver Box	
Carton Size	82cm X 66cm X 15cm (32.2" X 25.9" X 5.8")
Weight	24 LB (11 KG)
Qty. / Ctn.	1 set

Safety Warnings

- Warning!** The installer is responsible for correct and safe installation.
- Warning!** Do not connect or disconnect the fixture with the driver box while under load.
- Warning!** Mount the system to something that can hold the weight of the LED fixture.
- Warning!** Do not touch the leds to avoid damage.
- Warning!** Switch off the mains power before installation.



A: Mounting Clips (4 pcs)

B: 17.7" (45cm) Stainless Steel Ropes (4 pcs)

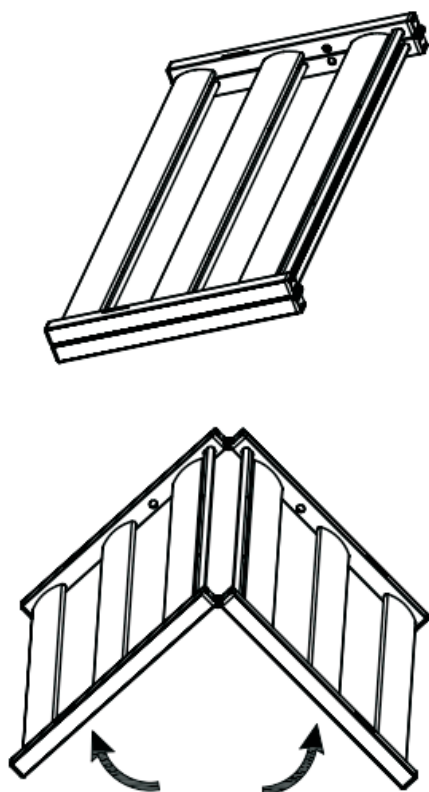
C: Mounting Hooks (2 pcs)

D: Adjustable Ratchet Hangers (2 pcs)

E: Konb screws for Fixing LED Driver Box (4 pcs)

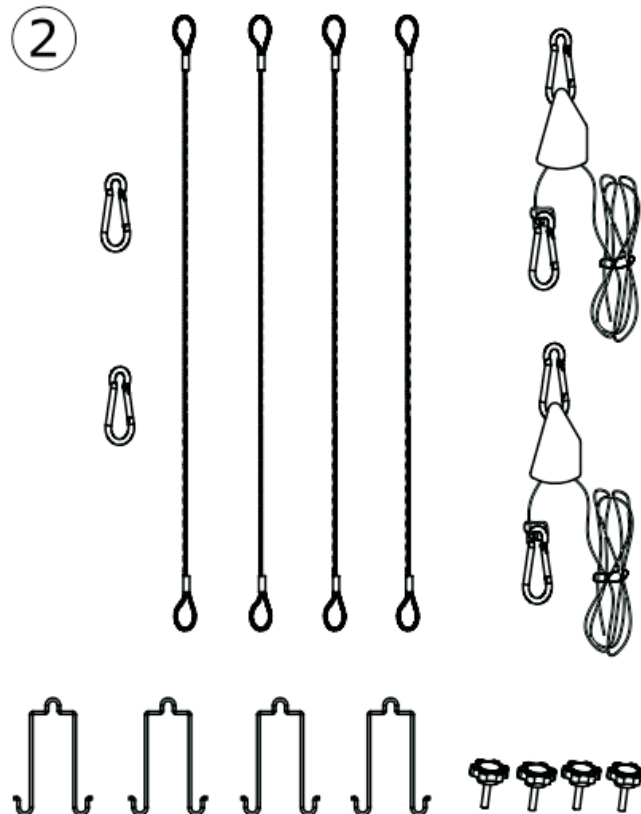
F: AC Power Cord and Plug (1 pc)

1



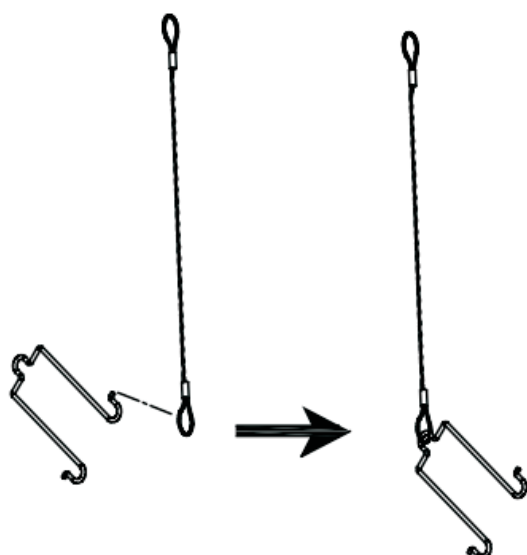
Unfold the LED fixture.

2



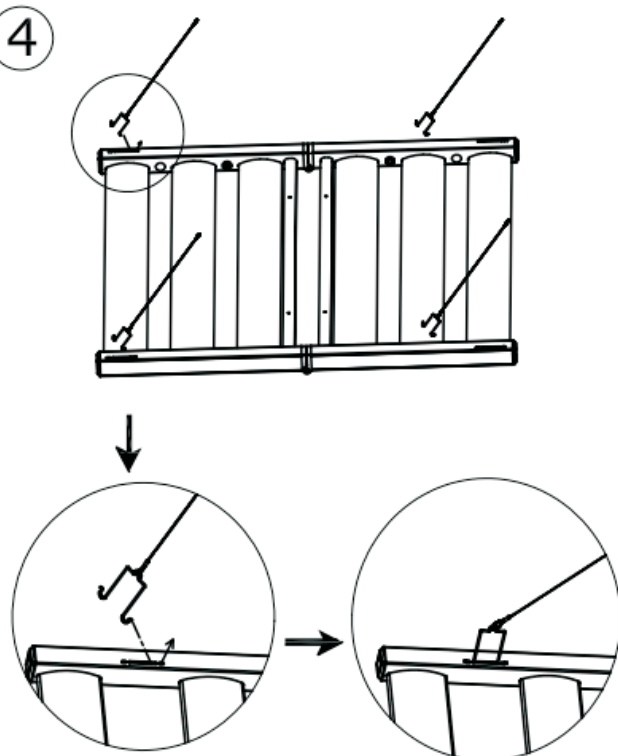
Take out the accessories from bags.

3

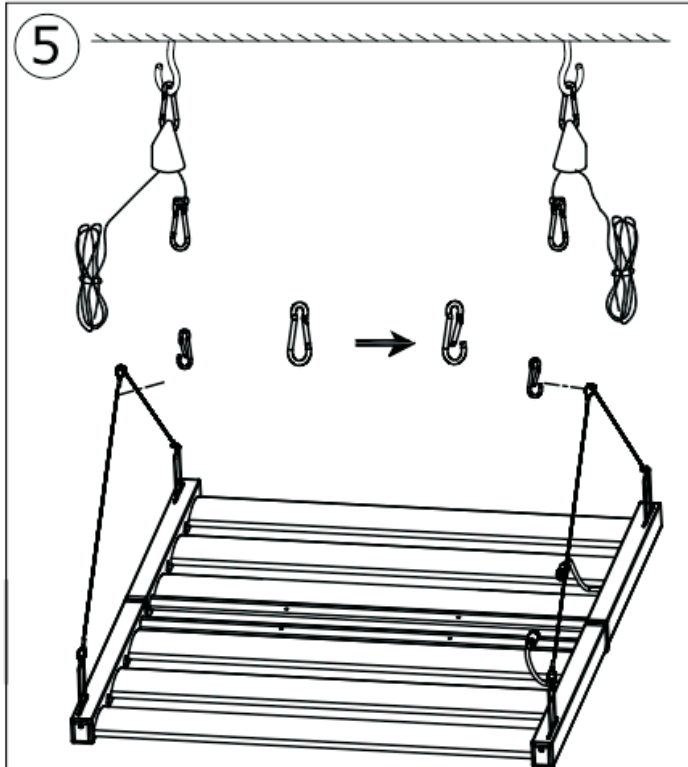


Connect mounting clips with steel ropes.

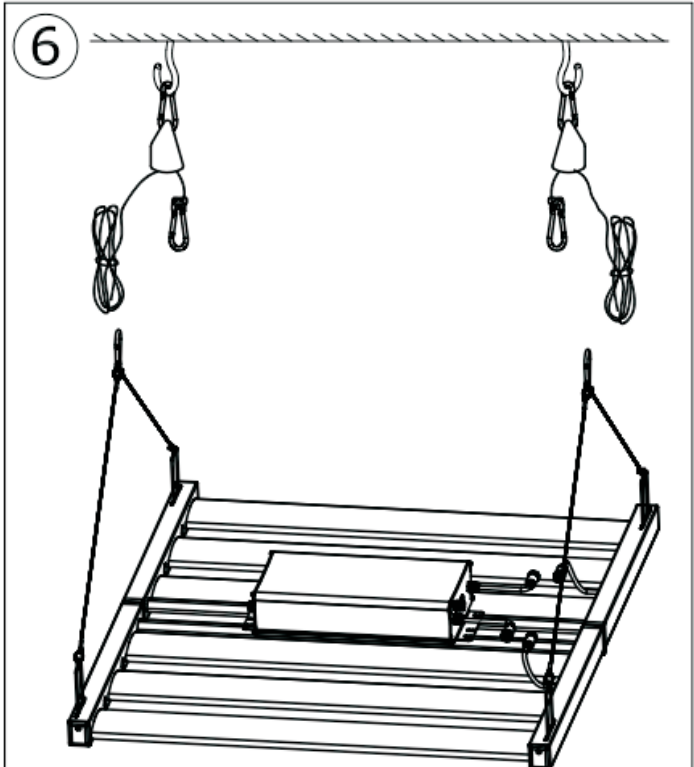
4



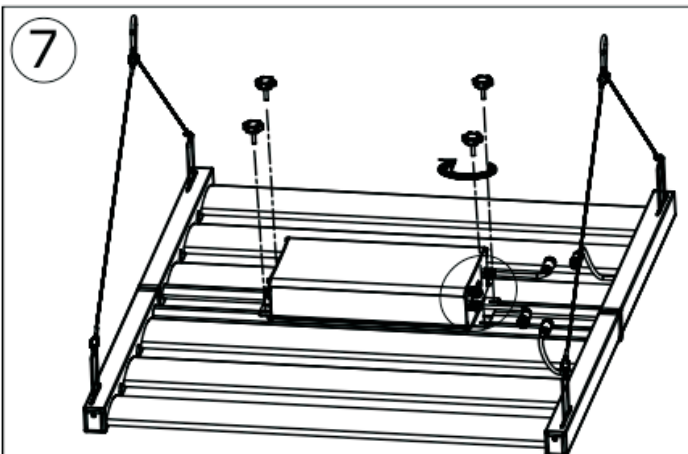
Snap mounting clips into fixture rails.



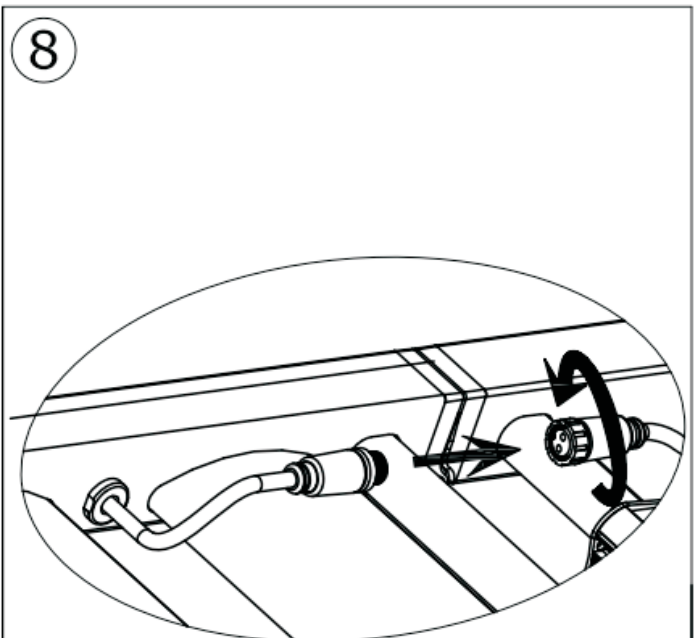
Hook steel ropes with ratchet hangers.



Place the LED driver box onto the LED fixture.



Fix the LED driver box with the knob screws.



Link the male & female connectors of DC cables and twist them tightly.

